



# Private Sydney Discovery Tours

The best of our city at a relaxed pace. All the famous spots plus some off-the-beaten path gems.

## Sydney Eastern Suburbs & Bondi Beach

We'll head east through charming Paddington and well-to-do Vaucluse stopping in Watson's Bay and Bondi Beach where you can stroll along the beach or take a coastal walk.

## Sydney's North Shore

Sydney's North Shore hides coves and parks deep within its beautiful suburbs – we'll visit Mosman, before hitting Manly Beach. Options include North Head for sweeping views of the ocean and city skyline, or a beach-to-beach jaunt ending at Palm Beach and Barrenjoey Head.

### FULL DAY: 8 HOURS

City tour then your choice from among the North Shore or Palm Beach or a South Coast tour of Royal National Park and Sea Cliff Bridge.

FULL DAY  
\$1050

### HALF DAY OPTIONS 4 AND 6 HOURS

City tour plus Sydney's East or the North Shore.

4 Hrs \$675  
6 Hrs \$825



# Private Hunter Valley Wine Tasting Tour

Hunter Valley Semillon has been described as, 'Australia's unique gift to the world' – the Chardonnays and Verdelhos are good too.

## FULL DAY WINE TASTING 9-11 HOURS

Choose your preferred wineries or leave it up to us. We'll also discover local food producers along the way. Additional options include: a visit to the Australian Walkabout Wildlife Sanctuary, the scenic drive through Wollemi National Park, or a stop for morning tea in Brooklyn on the Hawkesbury River.

FULL DAY  
\$1150



# Private South Coast Grand Pacific Drive

The Grand Pacific Drive leads us through rainforests, over the iconic Sea Cliff Bridge, and through coastal villages.

## FULL DAY: 8-10 HOURS

To experience a diversity of beaches, valleys, and wineries all in one day try our South Coast, Kangaroo Valley and Southern Highlands wineries trip.

FULL DAY  
\$1050



Private Charter Tours	Group Size , \$AUD*		
	1-6	7-9	10-12
Sydney 4 hours	675	825	925
Sydney 6 hours	825	975	1075
Sydney 8 hours	950	1100	1200
Hunter Valley	1150	1300	1400
South Coast	1050	1200	1300
Canberra	1350	1500	1600
Blue Mountains Full Day	1050	1200	1300
Blue Mountains Half Day	825	975	1075
Blue Mtn & Jenolan Caves	1200	1350	1450

## Our private charter tours: your day, your way.

Rates Valid Until March 31 2020. Prices are in AUD and include 10% GST, and are inclusive of private charter of vehicle with guided commentary, tolls, National Park fees and drinking water.

Meals and admission fees are at guests own expense unless stated otherwise.

For additional activities not operated by us, we cannot and do not take responsibility for any injury or loss arising in any manner.

Child seats and booster seats supplied on request. \*Peak rates of an additional 20% apply between the 16th of December to the 15th of January Cancellation Fees 7 days prior to tour 20% 2 days prior to tour 100%

Sydney Adventure Tours Pty Ltd  
ABN: 45-612-164-315  
P.O Box R1492, the Royal Exchange, Sydney, NSW 1225  
Ph: +61 438-883-006  
Ph: +61 406-077-714



# SMALL GROUP PRIVATE CHARTER SPECIALISTS



## YOUR DAY - YOUR WAY

### SYDNEY ADVENTURE TOURS

www.sydneyadventuretours.com  
e info@sydneyadventuretours.com

† (+61) 438-883-006



# Your Own Private Blue Mountains Tour

- Luxury air-conditioned vehicles
- Pick up and drop off
- Sightseeing and Activities



Wentworth Falls

You choose your activities below



Glenbrook National Park

Fill your day your way with sightseeing, charming village strolls, and cosy dining plus your choice of activities.

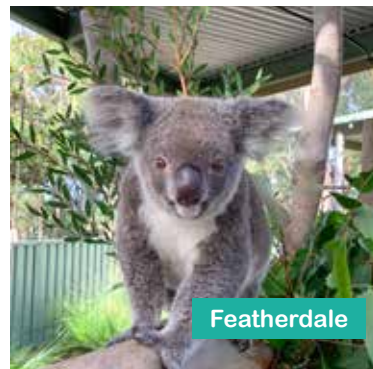
## THE SIGHTS

Away from the crowds, take in the ancient landscape of the Jamison Valley from Kings Tableland - a spot rich in Aboriginal history. We'll also visit the magnificent Three Sisters and follow Cliff Drive for more fantastic views

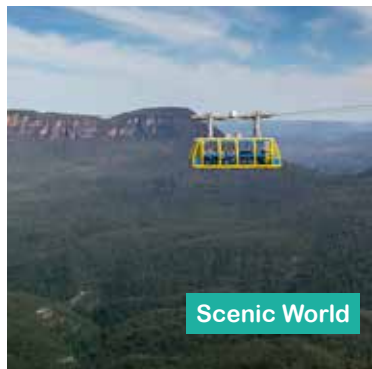


## ACTIVITIES

You choose! You can spot wild kangaroos at Glenbrook National Park or get up close and personal with the koalas at Featherdale Wildlife Park on the way. Bushwalk at Wentworth Falls or visit Blackheath for a look at the Grose Valley. Check out Scenic World for views from the glass-floored Skyway cable car and ride on the world's steepest railway



Featherdale



Scenic World

## SHOP & DINE

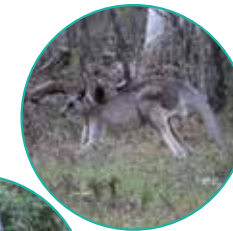
Leura, Katoomba, and Blackheath offer charming cafes, restaurants, and bakeries - we'll stop and explore some of these villages. We can have bite to eat, take a stroll, and look for perfect gifts in the high street shops. Please enquire in advance about fine dining options.



Blackheath



Spot wild Kangaroos



Scenic World Katoomba



Blackheath village and views



Featherdale Wildlife Park



Bushwalking Wentworth Falls



**BLUE MOUNTAINS FULL DAY**  
8-10 HOURS

Sightseeing plus your choice of two or three activities - its your day, your way.

FULL DAY  
\$1050

**BLUE MOUNTAINS HALF DAY**  
6 HOURS

Sightseeing plus one activity (except Blackheath) and time for a snack in Leura Village.

6 Hrs \$825

**BLUE MOUNTAINS & JENOLAN CAVES** 11-12 HOURS

Sightseeing, Jenolan Caves plus one activity

JENOLAN CAVES  
\$1200

Fees for visiting attractions are at your own expense, however, we have arranged discounted prices for our guests  
Featherdale Wildlife Park Adult \$25 Child \$15  
Scenic World Ride Pass Adult \$40 Child \$20  
Jenolan Caves \$45 Child \$30

\*Whether two or three activities can be accommodated will depend on which are chosen and how long is spent on each activity. We will discuss the options and plan the day with you.

**BOOK YOUR TOUR TODAY**

[www.sydneyadventuretours.com](http://www.sydneyadventuretours.com)

[info@sydneyadventuretours.com](mailto:info@sydneyadventuretours.com)

**Sydney Adventure Tours**  
+61 438 883 006

